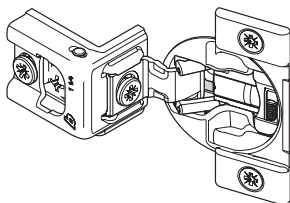
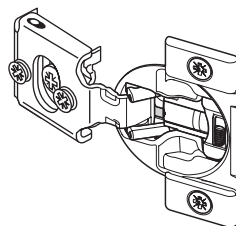


# COMPACT series

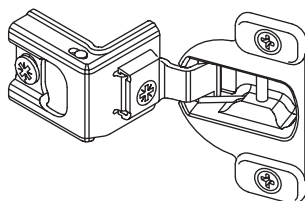
## Hinge & mounting plate adjustments



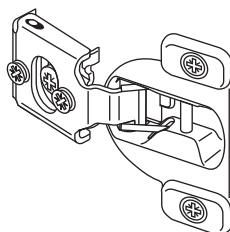
**COMPACT BLUMOTION**  
**38C/39C series**  
One piece — full overlay



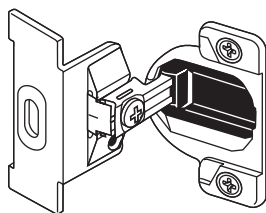
**COMPACT BLUMOTION**  
**38N series**  
One piece — partial overlay



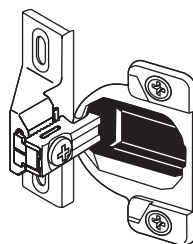
**COMPACT 38C/39C series**  
One piece — full overlay



**COMPACT 38N series**  
One piece — partial overlay



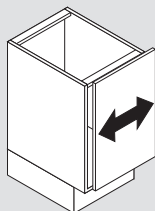
**COMPACT 33 series**  
Two piece — partial and full overlay



**COMPACT 33 series**  
Two piece — partial overlay

# COMPACT BLUMOTION and COMPACT 38C/39C and 38N

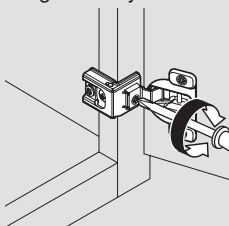
## Cam side adjustment



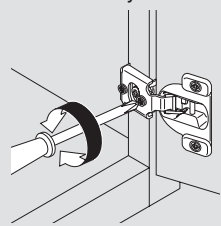
Rotate front screw counter-clockwise to increase door overlay, clockwise to decrease.

Range = 3 (1/8")

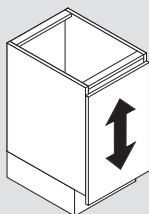
Large overlay



Small overlay



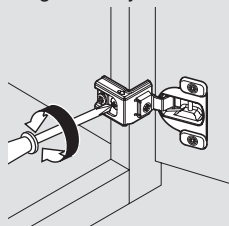
## Height adjustment



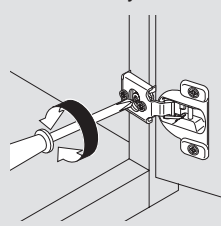
Loosen center screw. Adjust door to position and tighten screw.

Range = 6 (1/4")

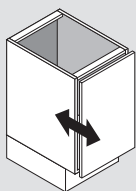
Large overlay



Small overlay

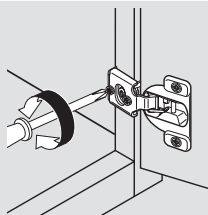


## Cam depth adjustment



Rotate back screw to adjust door to position.

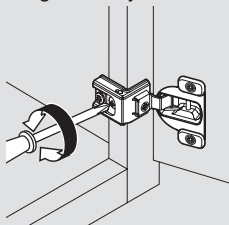
Range = -1/+2  
(-1/32"/+3/32")



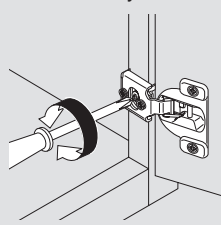
## Door removal

Rotate mounting screw counter-clockwise to remove hinge from cabinet.

Large overlay

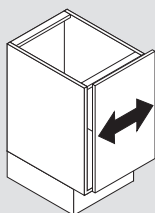


Small overlay



# COMPACT 33 series

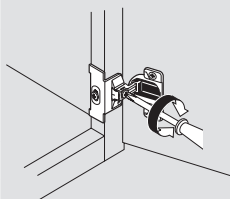
## Side adjustment



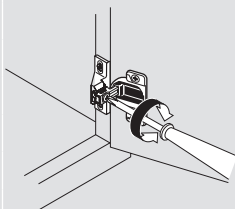
Loosen front screw.  
Adjust door to position  
and tighten screws.

Range = 3 (1/8")

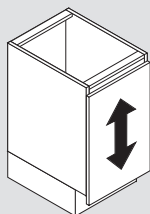
Large overlay



Small overlay



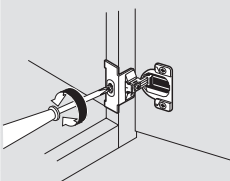
## Height adjustment



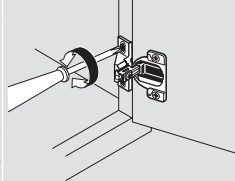
Loosen screws on the  
mounting plate. Adjust  
door to position and  
tighten screws.

Range = 7 (9/32")

Large overlay



Small overlay



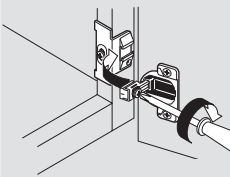
## Door installation

To reinstall, slide hinge onto mounting plate,  
tighten screws.

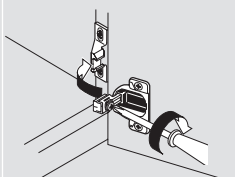
**NOTE:** Before finishing hinge  
installation, place set screw  
in hinge plate to prevent  
hinge plate movement  
(1-3/8" or greater overlays only)



Large overlay



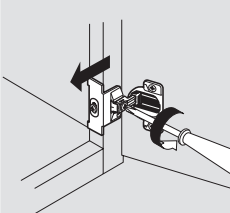
Small overlay



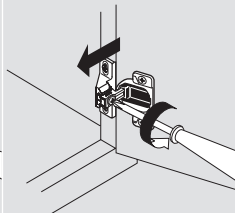
## Door removal

Loosen side adjustment screw. Slide hinge off  
mounting plate towards center of cabinet.

Large overlay



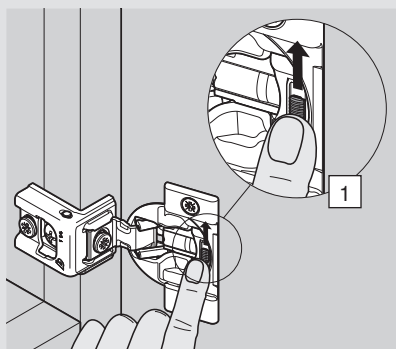
Small overlay



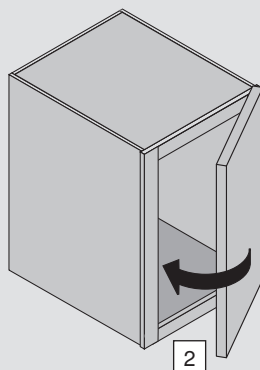
# COMPACT BLUMOTION 38C/39C and 38N series

## COMPACT BLUMOTION deactivation switch on the hinge cup

For small or light doors, the BLUMOTION can be deactivated on one of the hinges.



Door must be closed once for the deactivation to be complete. To reactivate, move switch back to original position.

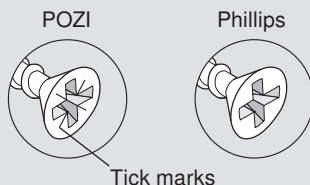


## Suggested tool for installation and adjustment

### POZI DRIVER and bits



A POZI screwdriver (different from Phillips) is the most crucial tool you can use to assure that full torque is applied to all Blum mounting screws. POZI screws can be identified by the distinctive "tick" marks located in the center of the screw head recess.



Blum, Inc.  
7733 Old Plank Rd.  
Stanley, NC 28164  
800-438-6788  
704-827-1345  
fax 704-827-0799  
[www.blum.com](http://www.blum.com)



Technical specifications subject to change without notice.  
LIT.HN6400.11.10 © 2010 Printed in USA

